

SPEC SHEET + MEASUREMENTS

PORT AUTHORITY.

Port Authority® Puffer Vest. J853

Product photo



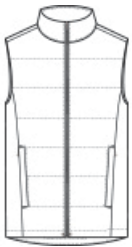
With wider baffles for a modern look, this water-resistant puffer looks cool while keeping you warm.

- 100% polyester shell and lining
- Molded center front zipper
- Interior storm flap
- Zippered hand pockets
- Insulation method: 4.4-oz. polyfill
- Water protection method: water-repellent finish
- Port Pocket™ for decoration access

CARE INSTRUCTIONS

Machine Wash Cold. Mild Detergent. Only Non-Chlorine Bleach When Needed. Tumble Dry Low. Cool Iron If Necessary. Do Not Dry Clean.

Sketches



front



back

SPEC SHEET + MEASUREMENTS

PORT AUTHORITY.

Port Authority® Puffer Vest. J853

PRODUCT MEASUREMENTS

	XS	S	M	L	XL	2XL	3XL	4XL
Body Length at Back	27	28	29	30	31	32	32 1/2	33
Chest	19	20 1/2	22	23 1/2	25	26 1/2	28 1/2	30 1/2

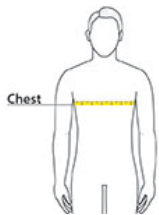
Body Length at Back: Measured from high point shoulder to finished hem at back.

Chest: Measured across the chest one inch below armhole when laid flat.

SIZE CHARTS

	XS	S	M	L	XL	2XL	3XL	4XL
Chest	32-34	35-37	38-40	41-43	44-46	47-49	50-53	54-57

HOW TO MEASURE



CHEST

Measure under the arm and around the fullest part of the chest with arms down, keeping tape horizontal.

SPEC SHEET + MEASUREMENTS

PORT AUTHORITY.

Port Authority® Puffer Vest. J853

COLORS



Deep Black
PMS BLACK
C



Dusk Blue
PMS 2374C



Shadow Grey
PMS COOL
GREY 10C